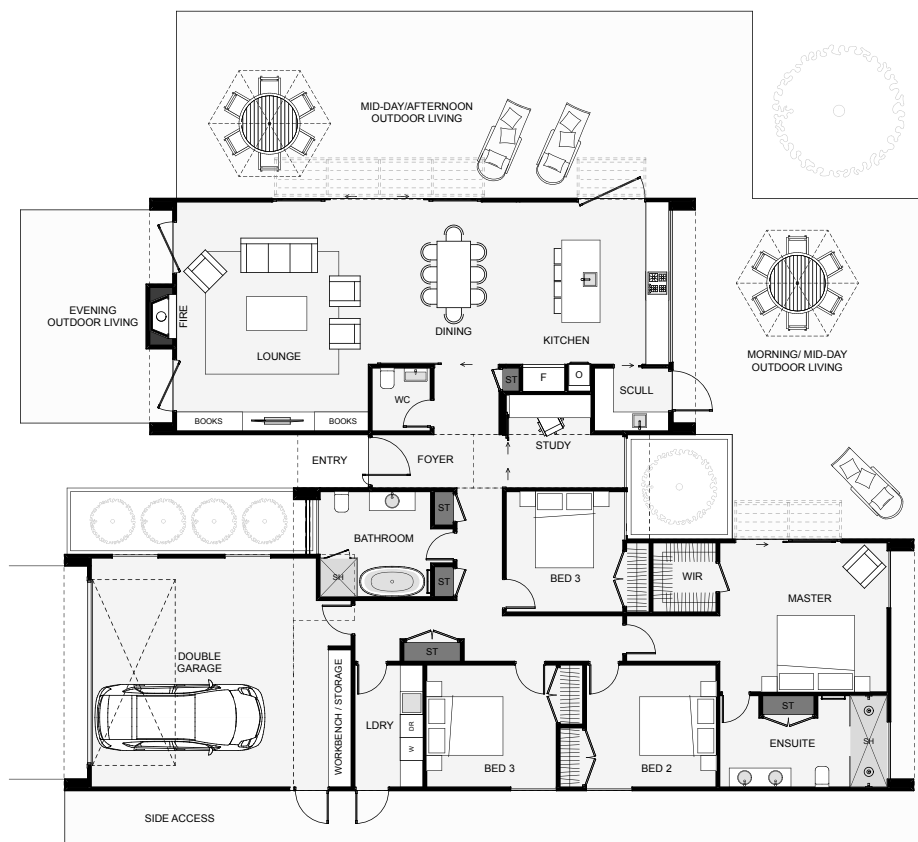




This modern four bedroom home has three core parts that make up its strong geometric frontage. When entering the foyer, a study slider can be opened so visitors can enjoy a view through full height glazing out to whatever centrepiece you desire. The dining takes in the morning sun from a large sliding window in the kitchen which drops right down to the bench level. Extra features include the scullery, a workbench within the garage and a large ensuite. If you're looking to build a bold home with a ton of features, this is it!



Floor Area: 240m<sup>2</sup>

2 4+ 2.5 1

22.2m 15.5m

Contact Ryan Bridgens:

Ph: 021 560 889

E: Info@bridgens.nz

[www.bridgens.nz](http://www.bridgens.nz)

